

LD56T



Low Glare Tilted Interior/Exterior In Ground LED Uplighter

Data sheet - Page 1

The LD56T packs a lot of features into a very compact product. It is an incredibly versatile LED uplighter which has been used in projects all over the world in a multitude of applications. The LED is angled at 6° to focus the light up a wall or column. It is set back for reduced glare, whilst the optics offer fantastic beam shape and spread. This is a very tough, high quality fitting, machined from high grade materials.

Key Features

- LED and lens assembly recessed and tilted at 6° within a black anodised body for reduced glare
- Tilted beam angle makes it an ideal solution for wall washing and column uplighting
- Excellent diffused beam shape from a range of optics
- Optional glare shield accessory
- No visible fixings. Options include spring fixing clips, O-rings and a first fix sleeve and a ground tube
- Can be used as an uplighter or downlighter
- Integral anti wicking barrier increases protection against moisture ingress due to incorrect IP rated cable connections
- Range of bezel finishes available
- Variable output options
- Not designed for permanent submersion, please use our LD242A, LD41, and LD60
- Available with Switch, 0-10V, DMX, Dali or Mains dimmable drivers

Specification

Applications



Beam Angles

12°, 31°, 48°, 36° x 12°

LED type

1 x Cree XPG2

Colour temperature

2700K** / 3000K | 5000K

Drive Current (mA)	350	500	700	350	500	700
LED power* (W)	1.2W	1.7W	2.4W	1.2W	1.7W	2.4W
CRI (typical)	93	93	93	80	80	80
Forward voltage (V) ₁₀₀	3.0V	3.2V	3.4V	3.0V	3.2V	3.4V
Delivered lumens** (L ₁₀₀)	90	123	164	109	149	200
Lumens per circuit watt	75	72	68	91	88	83

LED lifetime (to 70% lumen maintenance) 50,000hrs at a max ambient temperature of 35°C (if specifying fitting in ambient temperatures of up to 45°C run at 500mA max, LD56-500)

Materials Black anodised aluminium body, Machine finish
316 stainless steel bezel (other options available)

Glass 5mm thick borosilicate

Wiring Comes pre-wired with 2 core 100mm lead, can be specified with up to 10m at extra cost

IP rating IP68 - Not for permanent submersion (for permanent submersion applications use our LD242A, LD41, LD60)

*LED wattage includes losses associated with using an 85% efficient driver

** 2700K lumen output is 12% lower than the 3000K figure listed

4000K lumen output is higher than the 3000K figure listed (80 CRI)



Design: Light IQ Project: Private Residence Product: LD56T



LD56T



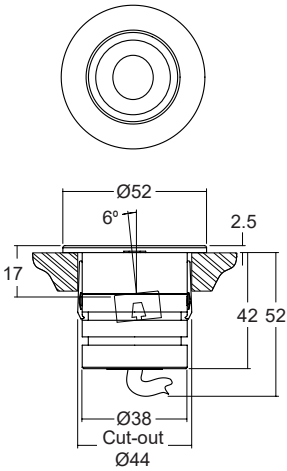
Low Glare Tilted Interior/Exterior In Ground LED Uplighter

Data sheet - Page 2

Dimensions and Fixing Options

/SC - Spring clip fixing

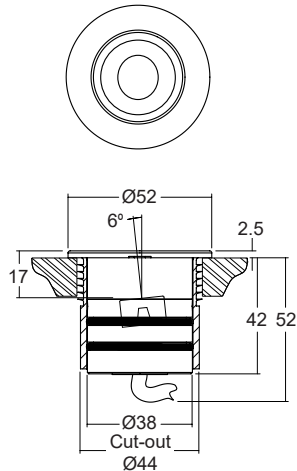
Useful for plinth or downlight applications



(Dimensions in mm)

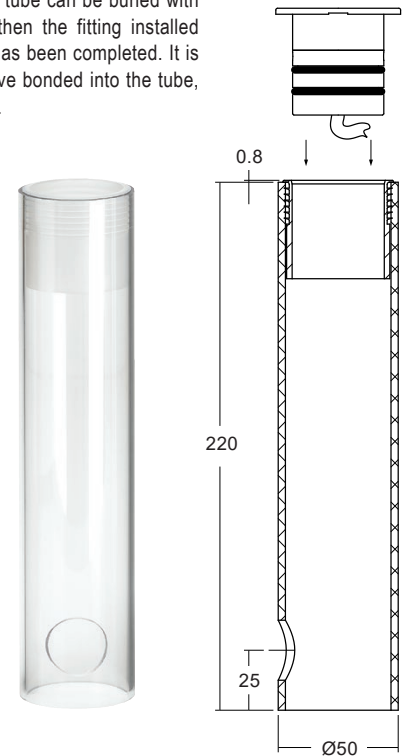
/476 - O-rings and sleeve

A more robust and water tight method of fixing, for in ground applications



/476GT - Ground tube

The in-ground tube has been designed for applications where a recessed uplighter is required in soil or gravel surfaces. The tube can be buried with the necessary wiring, and then the fitting installed after the landscaping work has been completed. It is supplied with the fixing sleeve bonded into the tube, and can be cut down on site.



Product: LD56T
Project: Private Residence
Design: Design Plus Light

LD56T



Low Glare Tilted Interior/Exterior In Ground LED Uplighter

Data sheet - Page 3

Accessories

/GS56 - Glare shield (not available with oval beam lens)

An optional glare shield is now available for the LD56T to further reduce glare from the LED and optic. This does not reduce the light on the lit surface (wall) but will cut out some light onto the ceiling. Consider the LD56 with glare shield as this is also very low glare but has a higher throw of light up the wall compared to the LD56T.



Photometrics

Photometric files are included in the design pack which can be downloaded from the LD56T product page on the website.

Order Codes and Options

Product code	LED colour	Lens angle	Finish	Accessory	Fixing
LD56T-350 - 500 - 700	<input type="text"/>	<input type="text"/>	<input type="text"/>	<input type="text"/>	<input type="text"/>

Example: LD56T-700 / LW30 / MB / Stainless steel / GS56 / 476

Product codes with output options

1.2W LED at 350mA	LD56T-350
1.7W LED at 500mA	LD56T-500
2.4W LED at 700mA	LD56T-700

LED colour options

	Suffix
Extra warm white (2700K)	/LW27
Warm white (3000K)	/LW30
White (4000K) - on request	/LW40
Cool White (5000K)	/LW50
Blue	/LB
Green	/LG
Red	/LR
Amber	/LA

Beam / lens angle options

12° narrow spot	/NB
31° medium	/MB
48° wide	/WB
36° x 12° oval (not available with glare shield)	/OB

Bezel finish options

Stainless steel 316
 Paint finish white / black / RAL
 Polished and passivated stainless steel (for marine environments)
 Antique Bronze (flamed solid bronze)

Accessories

Glare shield	/GS56
--------------	-------

Fixing options

Spring clips	/SC
First fix sleeve and O-rings	/476
Ground tube	/476GT

Use with 350mA, 500mA or 700mA constant current LED drivers

We have a wide range of dimmable LED drivers, 1-10V, DMX, DALI and Mains dimmable. Please see the downloads section on our website:
 To run 1-14 LD56T-350 in series use a TXDEL350D (0-10V dimmable)
 To run 1-14 LD56T-500 in series use a TXDEL500D (0-10V dimmable)
 To run 1-13 LD56T-700 in series use a TXDEL700D (0-10V dimmable)



Design: Light IQ Project: Private Residence Product: LD256